

MACH3 CNC Electronic Hand wheel For ModsMach3 Only



Specifications:



Figure 1

Hand wheel Key Features, on shown in Fig.1

Initial configuration

Modbus protocol used to communicate and Mach3.Using RS232 and PC connection, USB to take power.Mach3 modbus provides a very friendly interface, so use ModS electronic hand wheel without having to install additional drivers.

The ModS serial (COM port) and the computer serial port (COM port) connection, and tighten the screws.USB plug and the ModS computer connections. Run Mach3.

Step 1:



Figure 2

The interface of *MACH3* is displayed as Fig.2. The frequently-used action buttons are listed on the interface. We can configure *MACH* software at first.

Step 2:

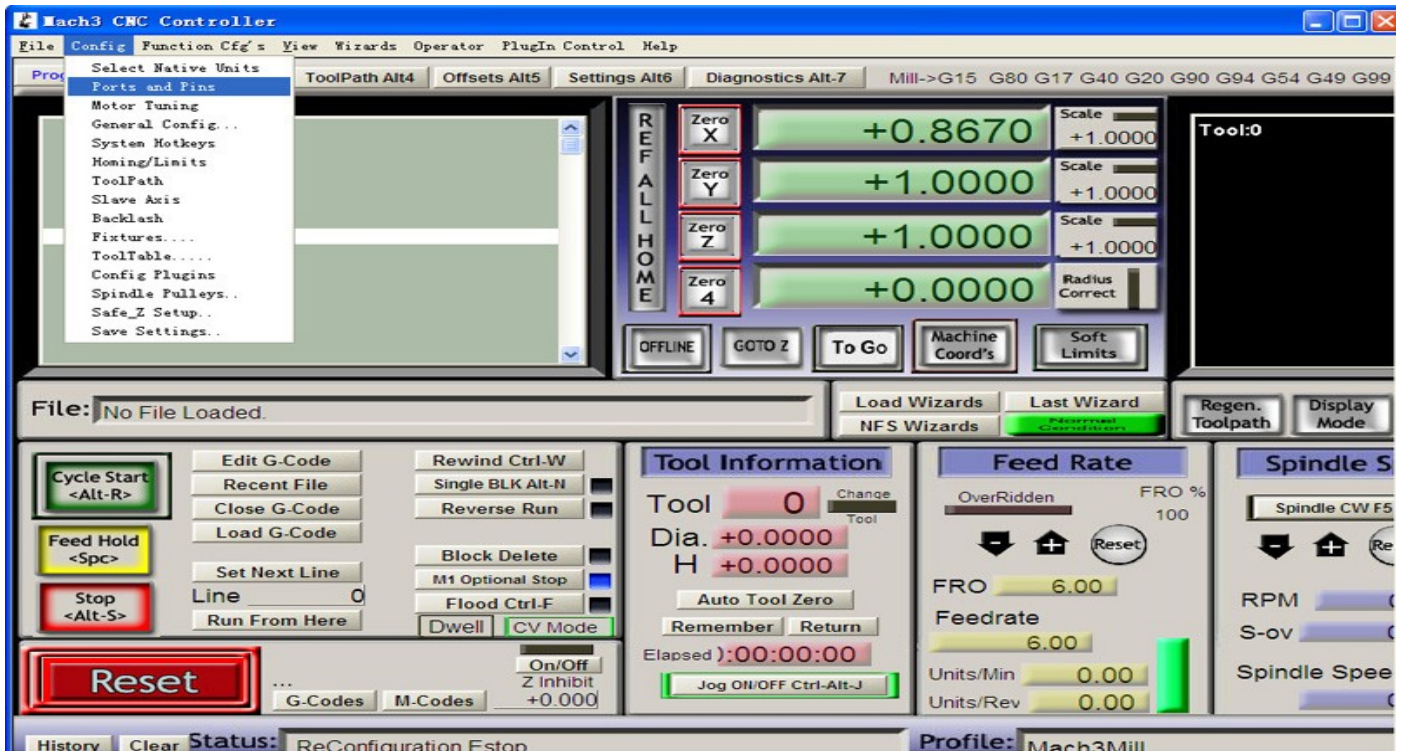


Figure 3

Click *PORT & PIN* sub-menu of *config* menu. Please refer to Fig.3.

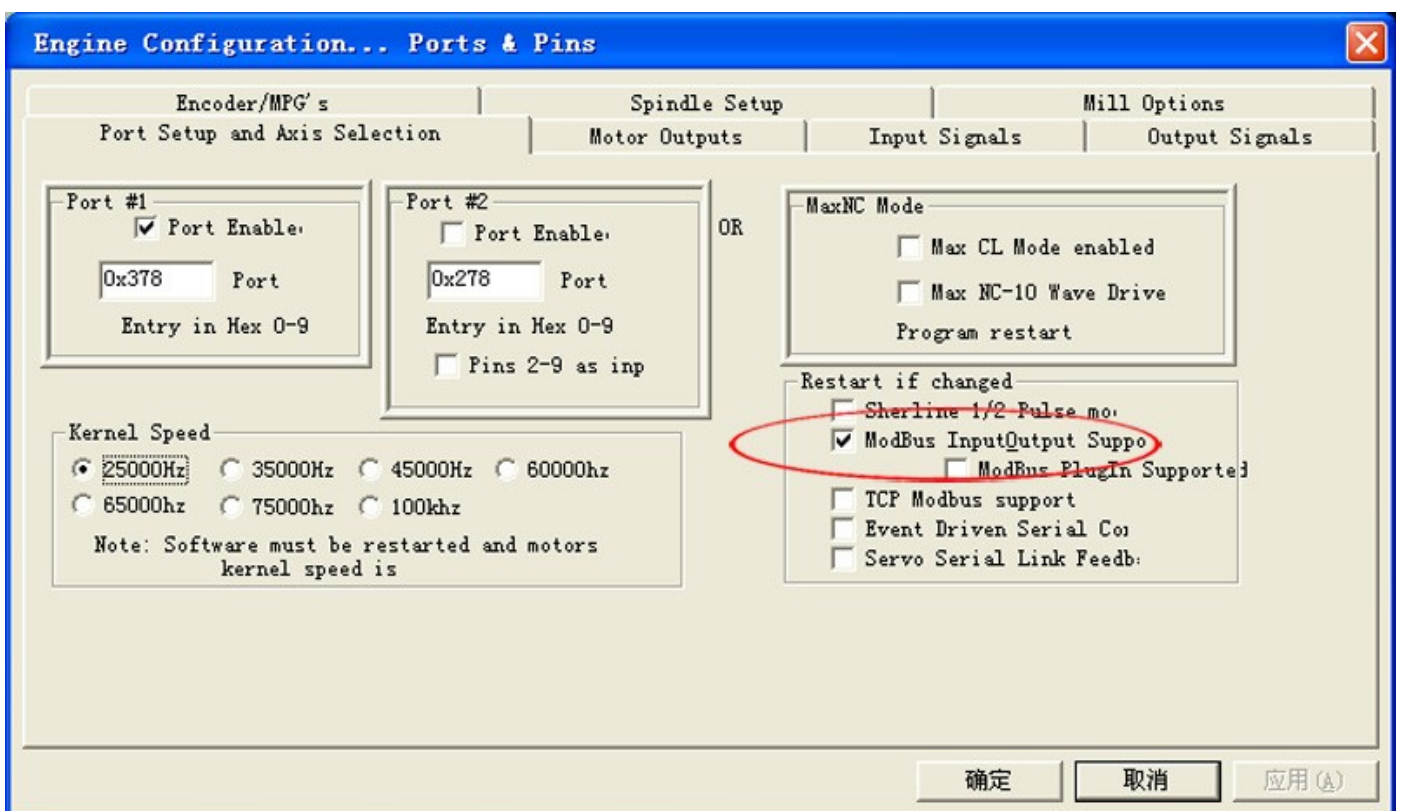


Figure 4

As shown in Fig.4, choose “*ModBus InputOutput Suppo*” hook on ,application.

Step 3:

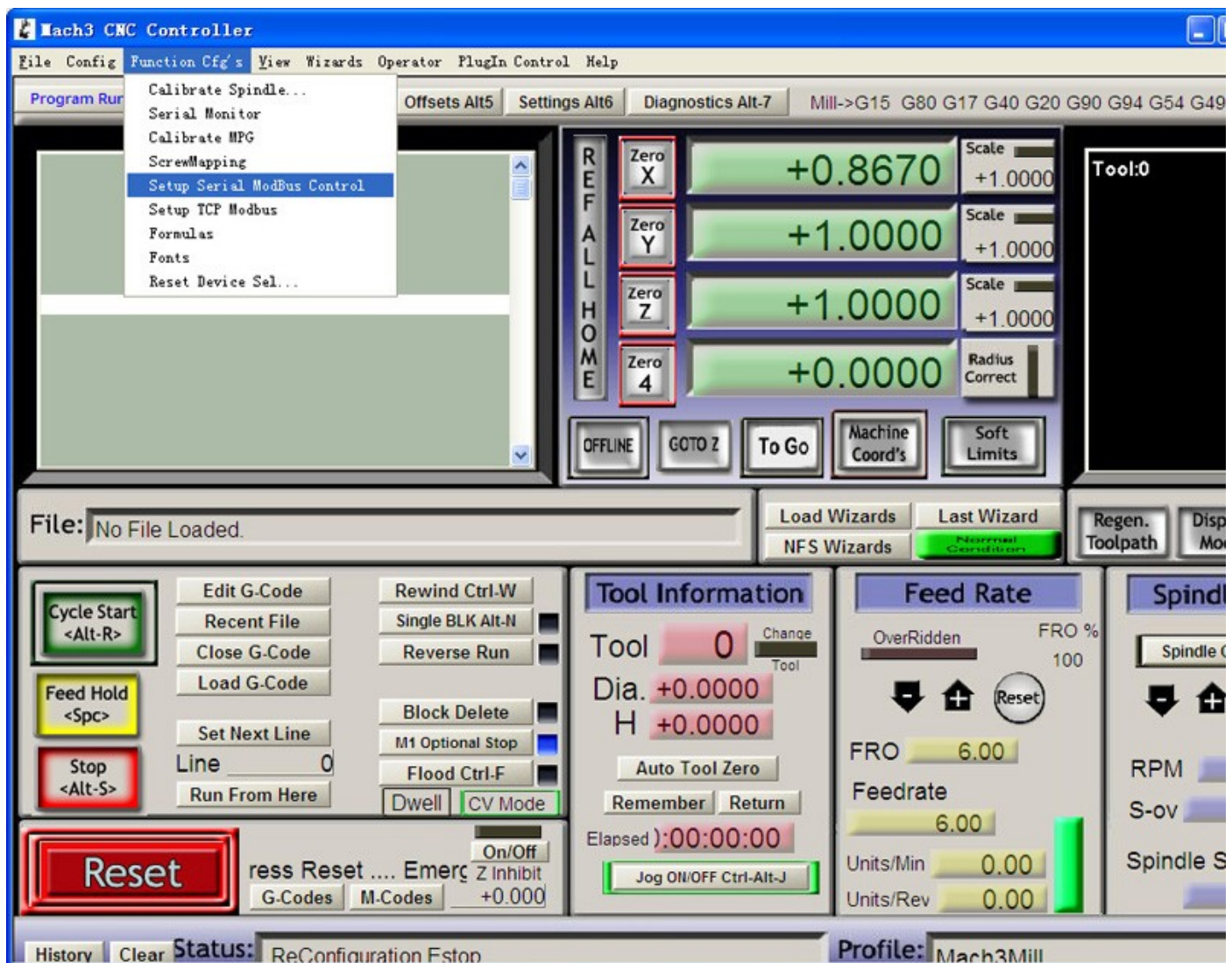


Figure 5

As shown in Fig.5, Click *Setup Serial ModBus Control* sub-menu of *Function Cfg's* menu.

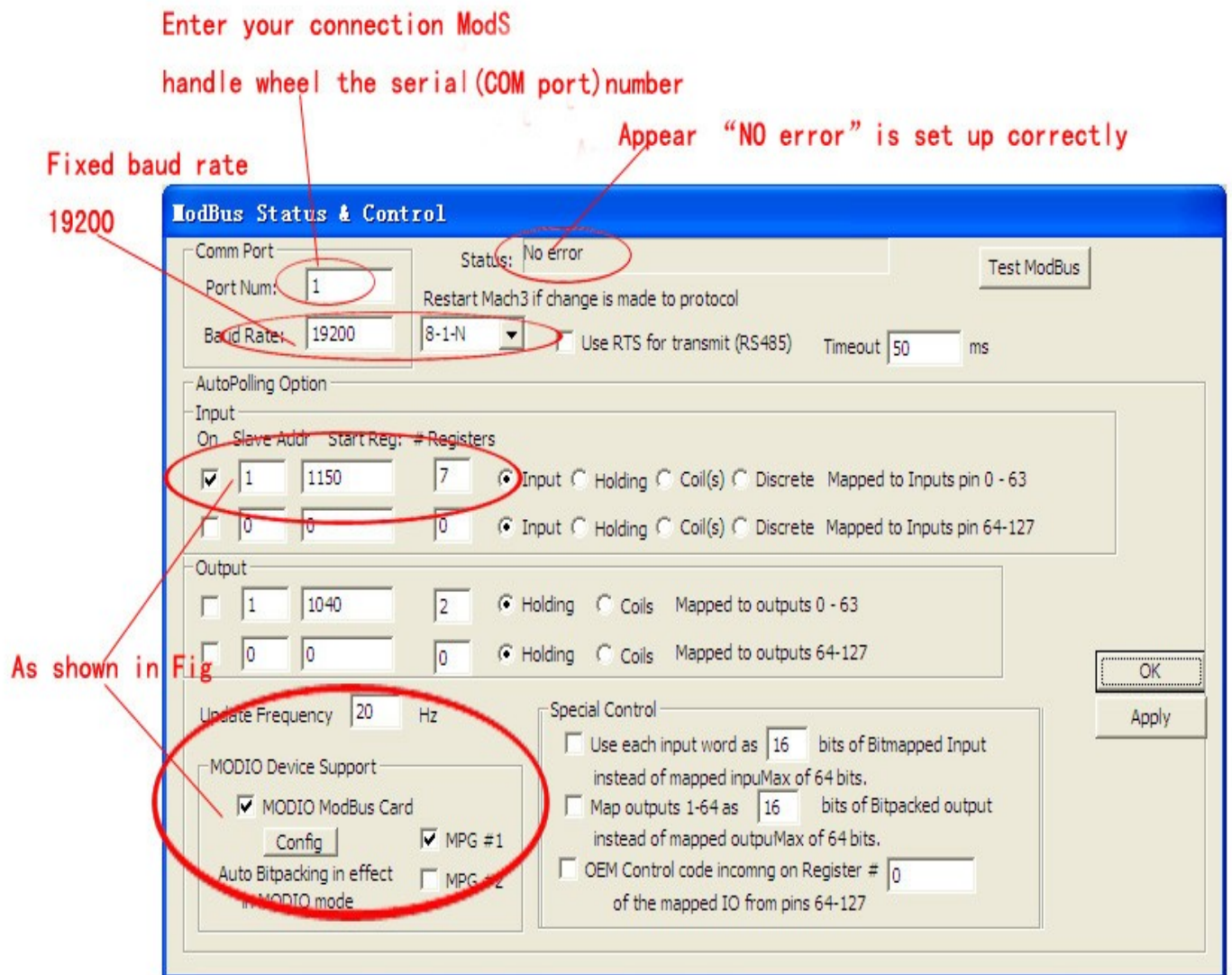


Figure 6

As shown in Fig.6 set up, Click "Apply", OK.

Step 4:

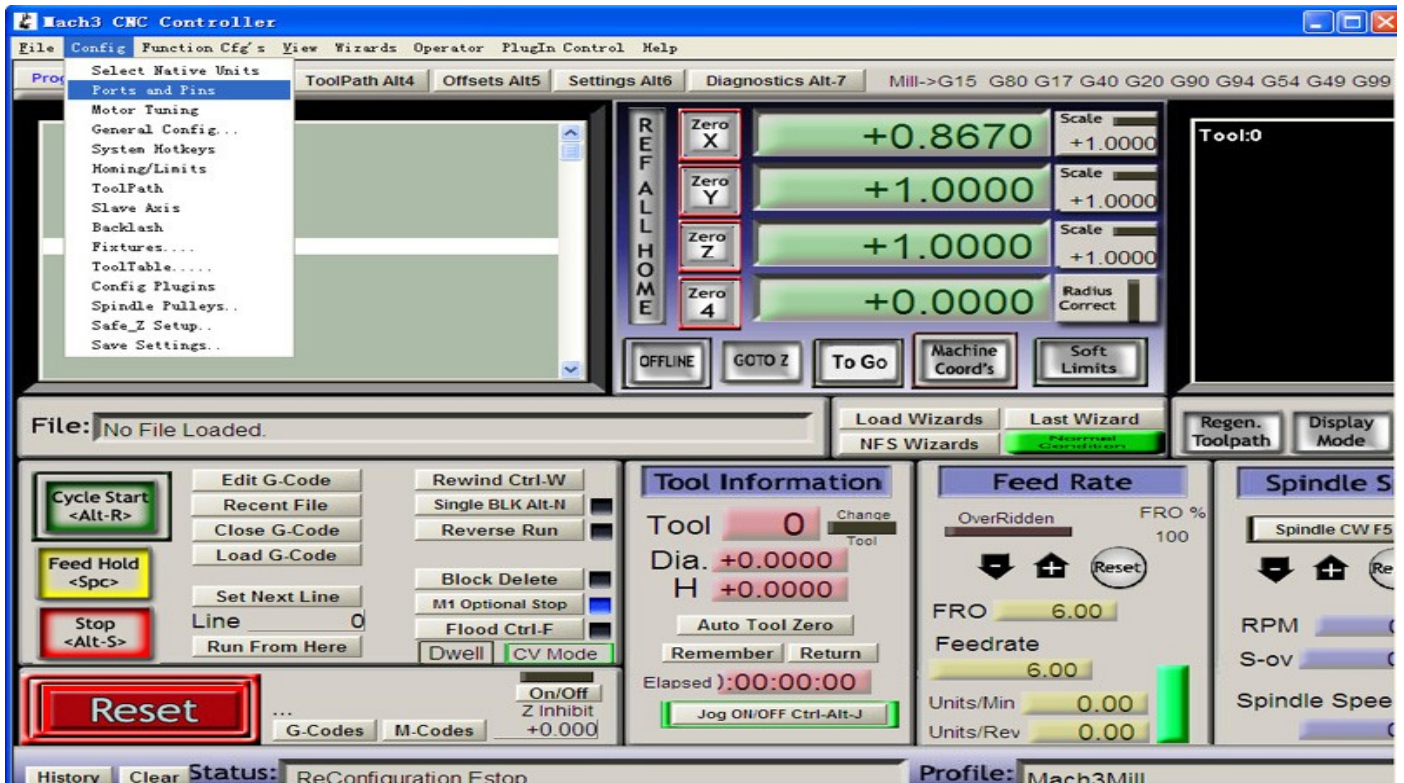


Figure 7

AS shown in Fig.7, Click *PORT & PIN* sub-menu of *config* menu. Click *Encoder/MPG's*, as shown in Fig.8 set up. Choose *MPG#1 Enabled* is hook on *Apply*.

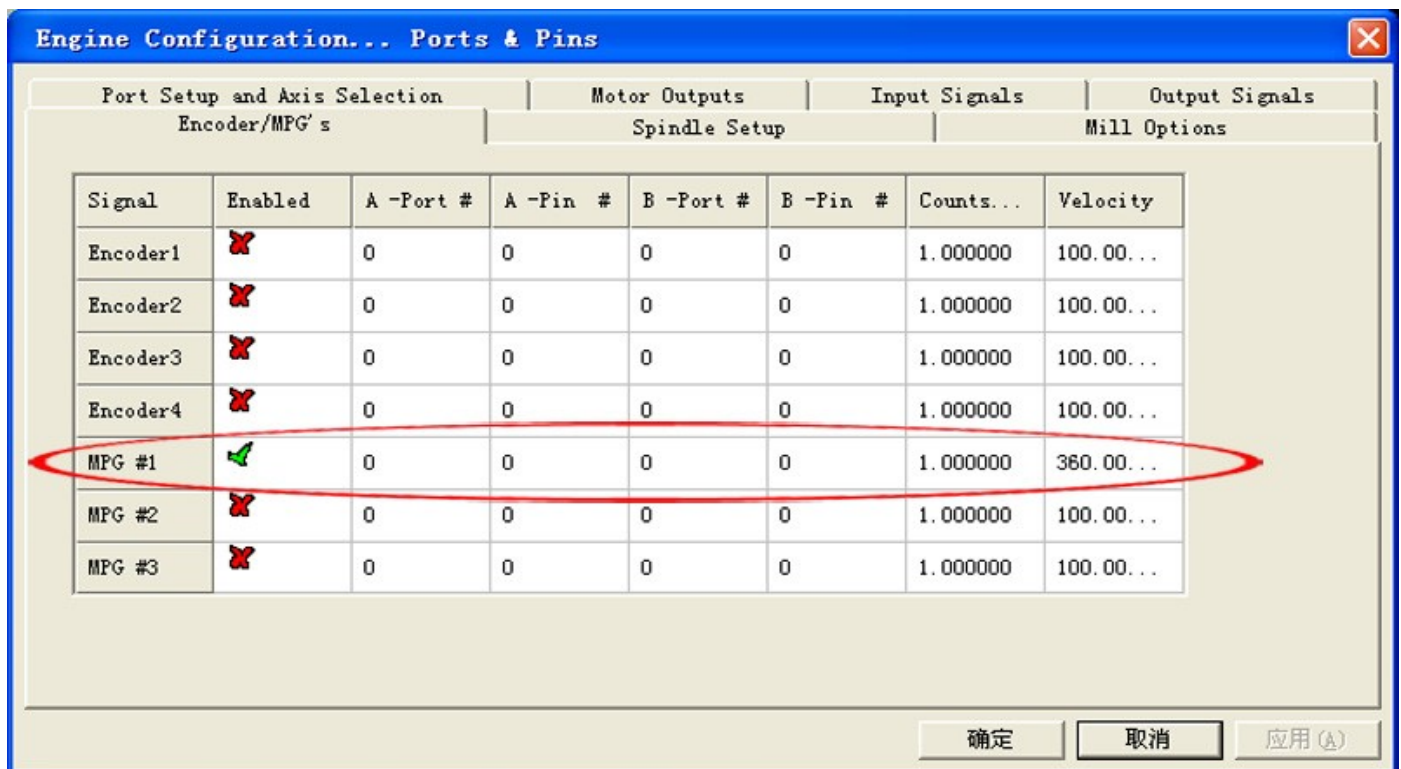


Figure 8

Step 5:

Download *Power Run Macro Pump*



The File saving route: C:\Mach3\macros\Mach3Mill , Make sure the route is right. If your Mach3 is installed in D disk, then the file saving route is : D:\Mach3\macros\Mach3Mill

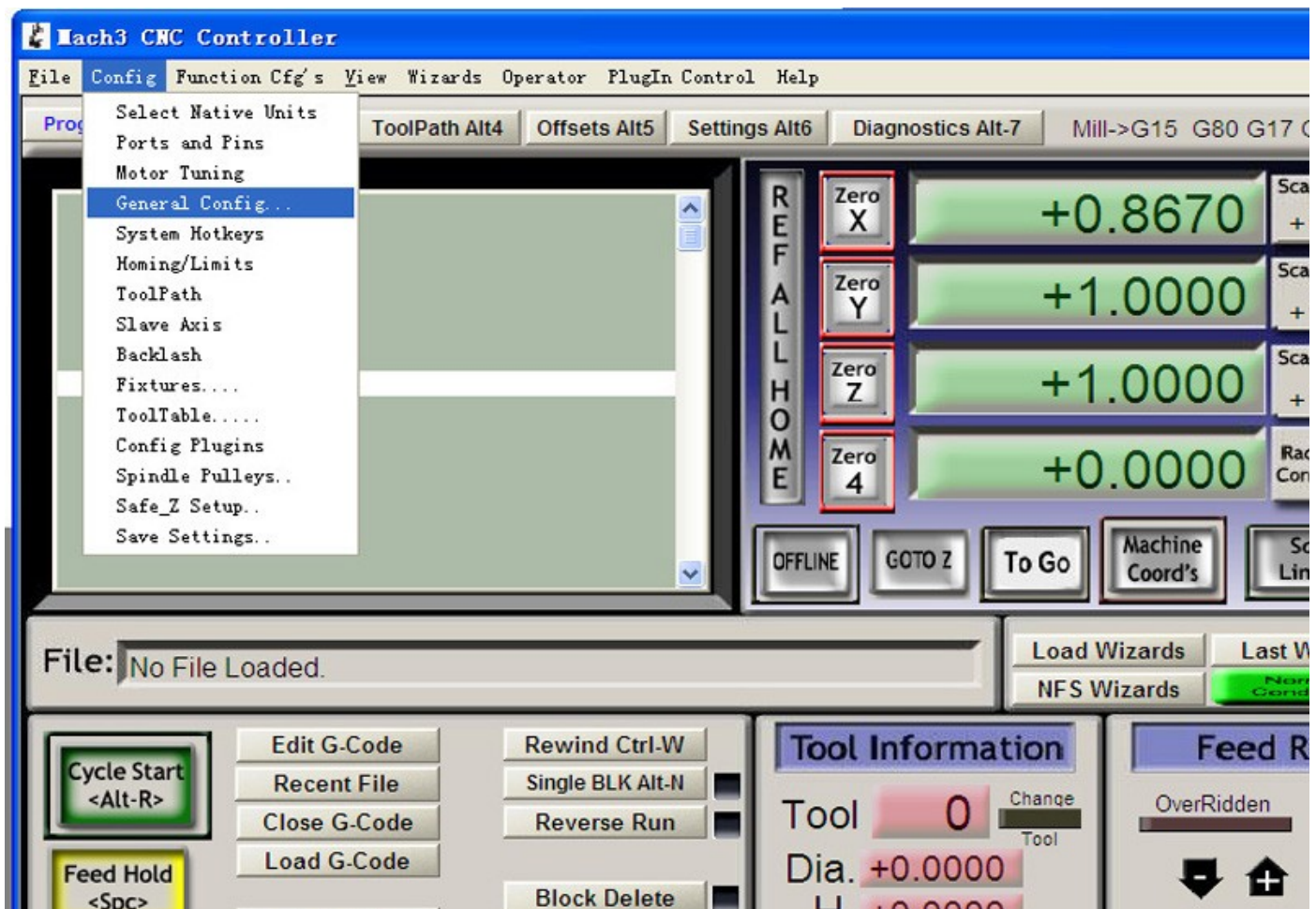


Figure 9

AS shown in Fig.9,Click “*General Config....*” sub-menu of *config* menu.

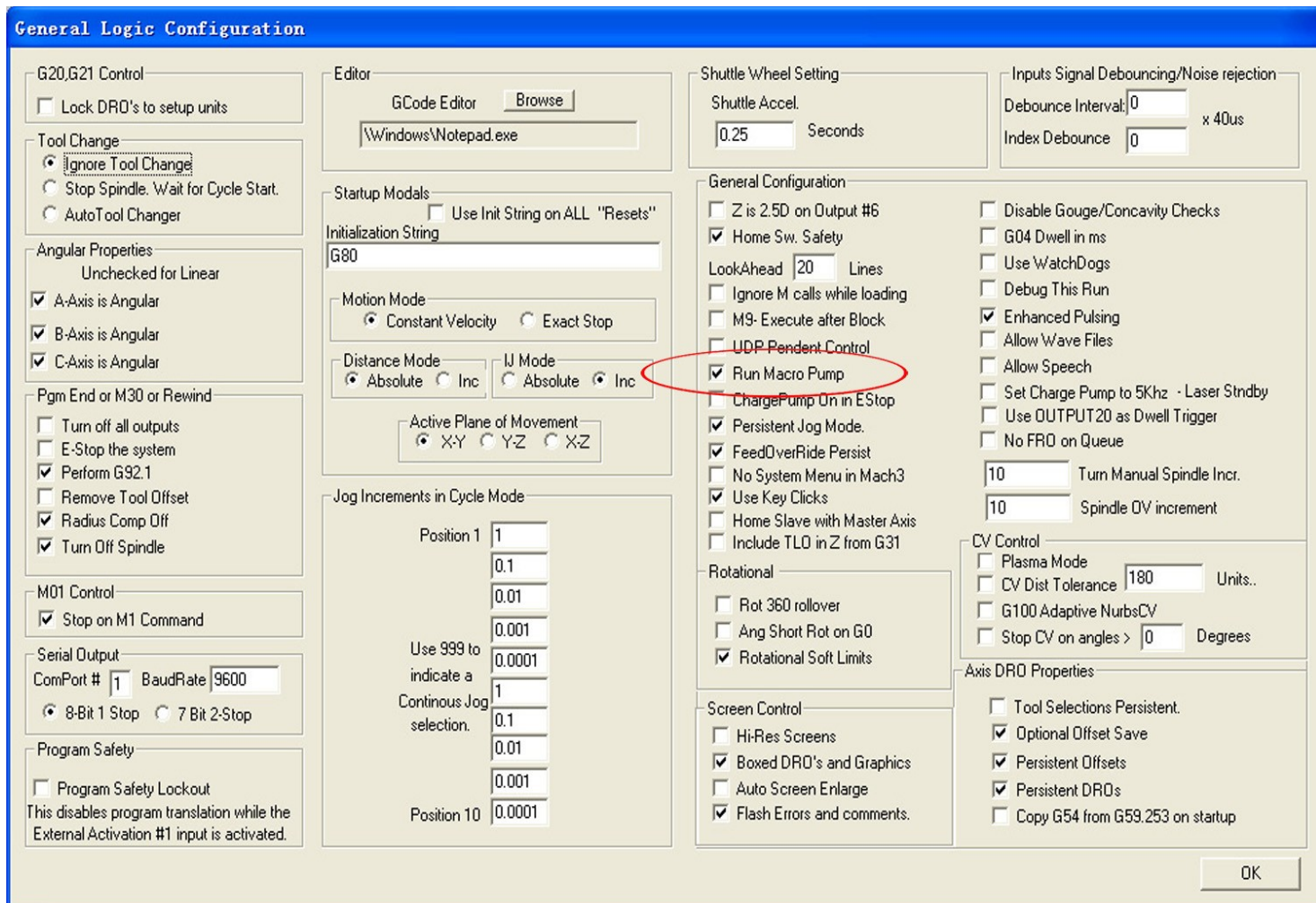


Figure 10

As shown in Fig.10 set up, Choose “Run Macro Control” is hook on, Apply.

After the above settings, ModS electronic hand wheel can be used. Ensure that the settings have been saved, restart the Mach3. If ModS hand wheel is also not working, please re-check your settings are correct, whether to save the settings.

If you press *TAB* on the keyboard, a manual test panel will be displayed. As shown in Fig.11

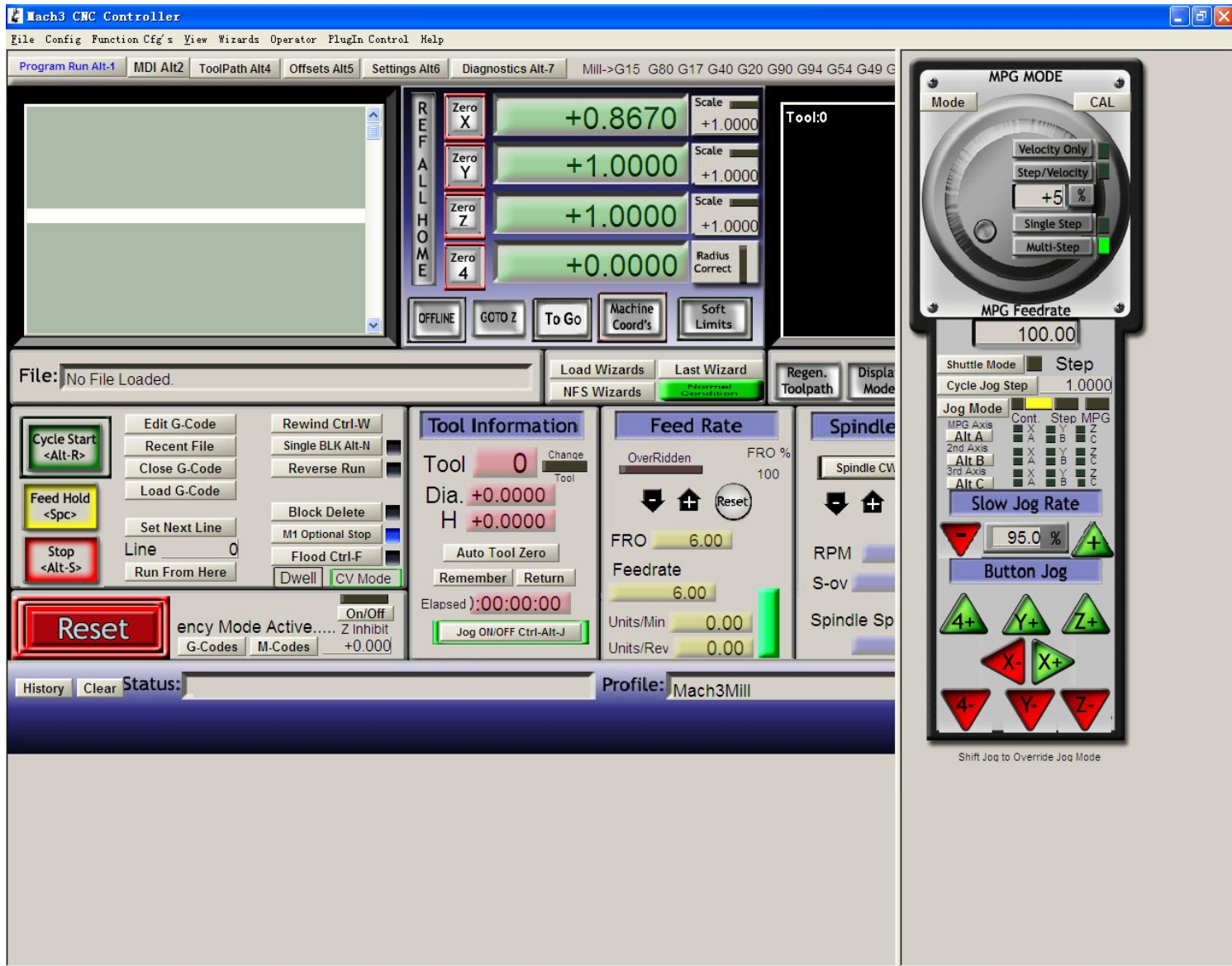


Figure 11

Notes:

1. ModS electronic hand wheel should be connected to the computer before opening Mach3, If you open the electronic hand wheel after Mach3 connection, There may occur some time walking straight axis of motion. Press the E-stop, and then be able to properly reset.
2. ModS connected to the computer, if not from the computer, and the computer can always connect.